

Exterior LED Lamp Wall Sconce

EW3609
INSTALLATION SHEET

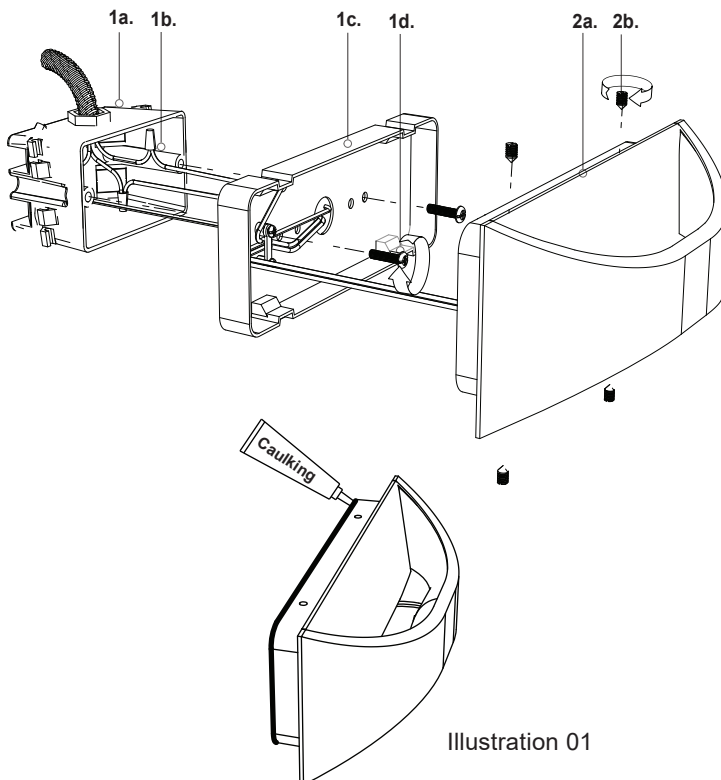
START FROM HERE

- Make sure **POWER** is **COMPLETELY OFF** at the fuse box
- Have your fixture installed by a qualified licensed electrician
- Prepare everything in a clear area
- Wear gloves at all time during this installation
- Read instructions carefully before you start assembly
- Keep this installation sheet for future reference

Technical Support: 1-855-855-8926

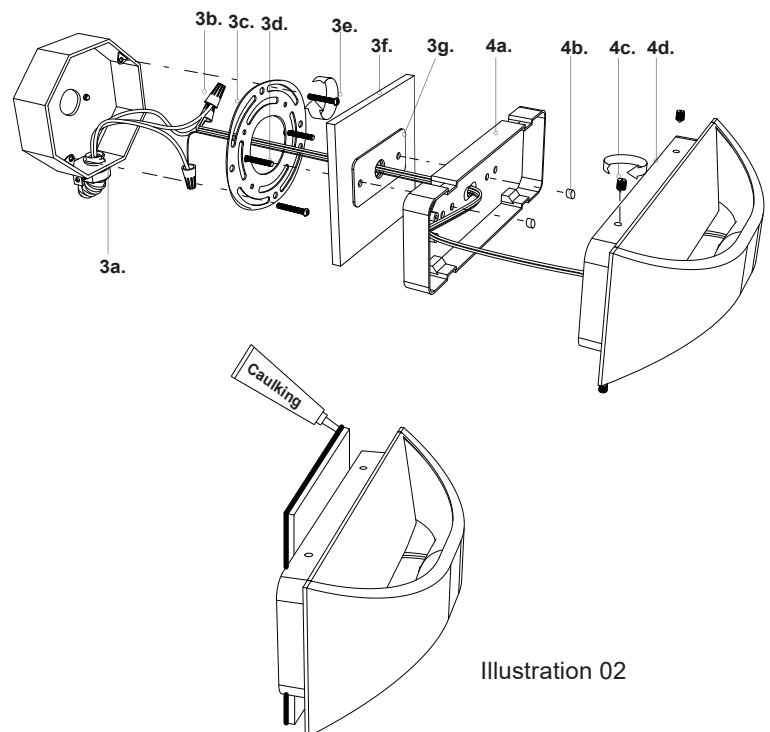
For Single Gang Box Instructions

1. Remove the fixture from its original packaging. Remove the canopy (1c) from within the fixture (2a) by removing the set screws (2b). Attach the canopy to the electrical junction box (1a) using the screws (1d) provided in the hardware package.
2. Attach all wiring with the provided marrettes (1b) (white to white "N", black to black "L", ground to ground "G"). Direct the fixture (2a) onto the canopy (1c) and secure the fixture by using the set screws (2b) provided.
3. You have now completed the installation of your fixture, enjoy.



For Octagon Electrical Box Instructions **(with optional backplate)**

1. Remove the fixture from its original packaging. Remove the canopy (4a) by removing the set screws (4c). Attach the mounting bar (3c) to the electrical junction box (3a), using the screws (3e) provided.
2. Thread the lead wires from the fixture through the canopy (4a), cover plate (3f), gasket (3g) and through the mounting bar (3c). Attach all wiring (3b) with the provided marretts (white to white "N", black to black "L", ground to ground "G"). Next, align the cover plate (3f), gasket (3g) and canopy (4a) to the screws (3d) and secure with nuts (4b). With the canopy and cover plate seated on the mounting bar, secure the fixture (4d) with all set screws (4c) turning clockwise.
3. You have now completed the installation of your fixture, enjoy.



IMPORTANT: To prevent moisture from entering the outlet box and causing a short, seal around the top and side perimeter between the fixture and the wall surface with weather resistant caulking. The space at bottom should be left un-caulked to prevent moisture build-up. (See Illustration 01 and 02)

KUZCO

19054 28th Avenue Surrey, BC Canada V3Z 6M3
T: 604 538 7162 TF: 1-855 85 KUZCO F: 604 538 7196
W: kuzcolighting.com
20190814